



applicom® Profibus interface cards allow you to connect your computer to Profibus DP, MPI/S7, FDL Networks.

applicom® is the easiest and trouble free solution to quickly connect your PC-Based application to the industrial world.

Profibus Network Interface Cards

Best choice for SCADA/HMI applications

Features

- **NEW ! RoHS compliant**
- **Complete and user-friendly package**
 - ▶ All components in the box
 - ▶ 2 years of hardware warranty
 - ▶ Local technical support with worldwide representation
 - ▶ 1 driver / 1 configuration tool for all protocols
 - ▶ Graphical User Interface
 - ▶ Network diagnostic and test tools
- **COMBO protocol: Run all Profibus protocols simultaneously (DP, S7, MPI, FDL, etc)**
- **On-board processor eliminates data bottle necks, ensuring delivery of time critical information**
- **Each card onboard an internal Data Base (32 Kwords + 32 Kbits)**
- **Compatible with:**
 - ▶ Simatic® S7 Series (S7-300, S7-400)
 - ▶ Simatic® S5 Series (95U, 115U, 135U, 155U)

- **Certified with more 50 major SCADA/HMI packages**

Supported OS

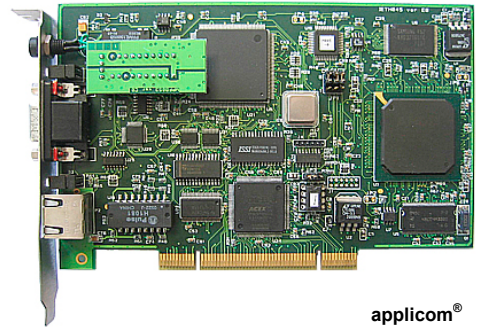
Standard package

- **Windows 32-bit (XP / 2003 Server / 2000 SP3 / NT SP6)**

Free Web Download

- **Windows XP Embedded, VenturCom RTX, VxWorks, QNX, Linux, Dos**

Woodhead is a member of PTO (PROFIBUS Trade Organization), PNO (PROFIBUS Nutzerorganisation e. V.) and France Profibus.



applicom®
PCU1500PFB / PCU1500S7



Overview

Based on a unique industrial communications concept, applicom® network interface cards are the **fastest, open, trouble-free** solution for interfacing PC-based applications (HMI, SCADA, MES, RDBM, spreadsheets, custom applications) and devices (PLCs, I/O modules, etc.) connected to industrial networks.

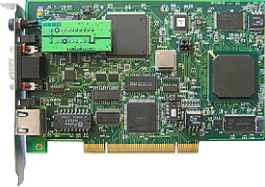
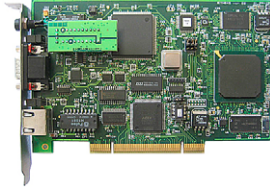
Thanks to smart technology, all applicom® cards (on-board processor) are able to execute all management and the processing of communications protocols (polling, frame management, etc.), resulting in **extremely fast, reliable, efficient application performance**.

The applicom® software package includes:

- Graphical configuration software.
- Test and network diagnostic tools.
- Data servers
 - ✓ OPC DA v1.0a, v2.05 and v3.0 (including an OPC client with its source code)
 - ✓ ActiveX Control + VBA code source generator
 - ✓ Wonderware I/O Server (DAServer, DDE, FastDDE, SuiteLink)
- Development libraries
 - ✓ DLL Library
 - ✓ MS Visual Studio (.NET/C#/VB/C++/C), Borland Delphi
 - ✓ National Instruments (LabWindows CVI, LabVIEW/VI)▲

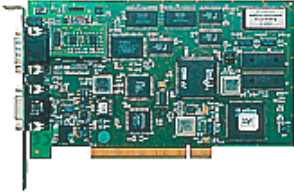



Technical data

	applicom® PCU1500PFB	applicom® PCU1500S7
		
Key Benefits	<ul style="list-style-type: none"> • Run all Profibus protocols simultaneously • Universal PCI 3.3 V / 5V (PCI-X compatible) • RoHS compliant • On-board processor 	<ul style="list-style-type: none"> • Universal PCI 3.3 V / 5V (PCI-X compatible) • Economic solution - Dedicated to Siemens Simatic® S7 • RoHS compliant • Run FDL & S7 simultaneously • On-board processor
Hardware		
Unit	PCI 2.2, short card, single slot, 3.3V/5V	PCI 2.2, short card, single slot, 3.3V/5V
Processor	AMD SC520 - 133 MHz	AMD SC520 - 133 MHz
ASIC	–	–
Memory	16 Mbytes SDRAM	16 Mbytes SDRAM
Flash Memory	4 Mbytes	4 Mbytes
Interruption	Hardware Plug&Play	Hardware Plug&Play
DPRAM Address	Hardware Plug&Play (32 Kbytes)	Hardware Plug&Play (32 Kbytes)
Discrete Input	Opto-coupled discrete input, Voltage -> +10 to +30 DC or 24 V AC (50-60 Hz)	Opto-coupled discrete input, Voltage -> +10 to +30 DC or 24 V AC (50-60 Hz)
Discrete Output	« Watchdog » output contact free from potential, (floating) (24V DC, 0.25A)	« Watchdog » output contact free from potential, (floating) (24V DC, 0.25A)
Dimensions (LxW)	168mm x 107mm (6.61" x 4.21")	168mm x 107mm (6.61" x 4.21")
Consumption	5.5 W	5.5 W
Operating T°	0° C (32° F) ↔ +65° C (149° F)	0° C (32° F) ↔ +65° C (149° F)
Storage T°	-40° C (-40° F) ↔ +85° C (185° F)	-40° C (-40° F) ↔ +85° C (185° F)
RoHS compliant	Yes	Yes
EMC Compliance⁽¹⁾	EN55022 Class B, EN61000-6-2, EN61000-3-2, EN61000-3-3	EN55022 Class B, EN61000-6-2, EN61000-3-2, EN61000-3-3
Communication port		
Port type	1 Profibus port (EN 50170)	1 Profibus port (EN 50170)
Connector	Profibus D-Sub, 9 pin, female	Profibus D-Sub, 9 pin, female
LED Indicator	2 leds: TX / RX	2 leds: TX / RX
Electrical Interface	RS485 optical insulation (500 V) (optional: Profibus D-Sub 9-pin attach vertical connector with diagnostics)	RS485 optical insulation (500 V) (optional: Profibus D-Sub 9-pin attach vertical connector with diagnostics)
Baud Rate	9600 kbps ↔ 1,5 Mbps	9600 kbps ↔ 1,5 Mbps
Supported Protocols		
Protocol	<ul style="list-style-type: none"> • Profibus DP-V0 (Master) • S7 / MPI (Master) • PPI/PPI+ (Master) • Send/Receive on FDL • FDL S5 (Master) • Profibus-FMS (on request) 	<ul style="list-style-type: none"> • S7 / MPI (Master) • PPI/PPI+ (Master) • Send/Rec on FDL



Technical data

	applicom® PCI2000PFB	applicom® CPC11000PFB
		
Key Benefits	<ul style="list-style-type: none"> • COMBO - 2 Profibus ports • Speed up to 12 Mbps • DP-V0 Master / Slave simultaneously • On-board processor • 	<ul style="list-style-type: none"> • Economic solution - Dedicated to Siemens Simatic® S7 • Run FDL & S7 simultaneously • CompactPCI form factor • On-board processor
Hardware		
Unit	PCI 2.2, short card, single slot, 5V	CompactPCI board, 5V
Processor	AMD SC520 - 133 MHz	AMD SC520 – 133 MHz
ASIC	ASPC2	ASPC2
Memory	8 Mbytes SDRAM	8 Mbyte dynamic RAM
Flash Memory	512 kbytes	512 kbytes
Interruption	Hardware Plug&Play	Hardware Plug&Play
DPRAM Address	Hardware Plug&Play (32 Kbytes)	Hardware Plug&Play (32 Kbytes)
Discrete Input	Opto-coupled discrete input, Voltage -> +10 to +30 DC or 24 V AC (50-60 Hz)	ns
Discrete Output	« Watchdog » output contact free from potential, (floating) (24V DC, 0.25A)	ns
Dimensions (LxW)	175mm x 107mm (6.89" x 4.21")	100mm x 160mm (3.93" x 6.29") - 3U
Consumption	5.5 W	5 W (max. 0.8A)
Operating T°	0° C (32° F) ↔ +65° C (149° F)	0° C (32° F) ↔ +65° C (149° F)
Storage T°	-40° C (-40° F) ↔ +80° C (176° F)	-40° C (-92° F) ↔ +80° C (176° F)
RoHS compliant	No	No
EMC Compliance⁽¹⁾	EN55022 Class B, EN61000-6-2, EN61000-3-2, EN61000-3-3	EN55022 Class B, EN61000-6-2, EN61000-3-2, EN61000-3-3
Communication port		
Port type	2 Profibus ports⁽¹⁾ (EN 50170)	1 Profibus port (EN 50170)
Connector	Profibus D-Sub, 9 pin, female	Profibus D-Sub, 9 pin, female
LED Indicator	2 bicolor leds: TX / RX, Bus Fault Status	1 Status LED / 1 Bus Fault LED
Electrical Interface	RS485 optical insulation (500 V)	RS485 with galvanic insulation (500 volts)
Baud Rate	Port1: 9.6 kbps ↔ 12 Mbps Port2: 9.6 kbps ↔ 187,5 Kbps	9600 kbps ↔ 12 Mbps
Supported Protocols		
Protocol	<ul style="list-style-type: none"> • Profibus DP-V0 (Master/Slave) • S7 / MPI (Master) • Send/Receive on FDL • PPI/PPI+⁽²⁾ (Master) • FDL S5⁽²⁾ (Master) • Profibus-FMS⁽²⁾ (on request) 	<ul style="list-style-type: none"> • Profibus DP-V0 (Master & Slave) • S7 / MPI (Master) • PPI/PPI+ (Master) • Send/Rec on FDL

(1): You can replace the Profibus Port2 by a Serial port (RS232 or RS485, speed up to 38.4 Kbps) that is able to run any Serial protocols of the applicom® offer (Modbus RTU / ASCII, AS511, 3964/3964R, TI-Dir , Uni-Telway, DF1, SNPX, etc).

(2): Port2 of the card

Profibus Network Interface Cards



- Profibus backplanes -



- Profibus gateways -



- Profibus connectivity -



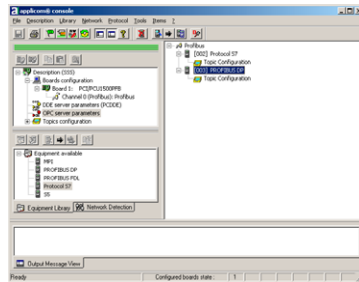
- Profibus D-Sub with diagnostic -



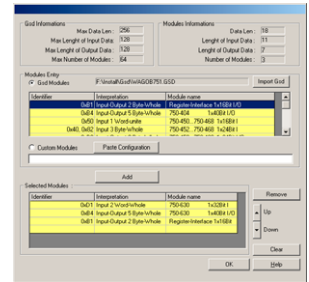
- IP67 & IP 20 I/O modules -

Software tools

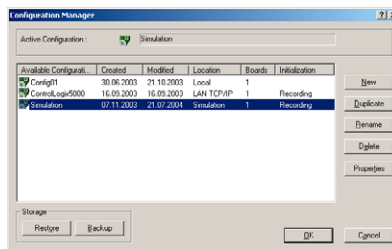
The core of applicom® solutions lies in effective software tools enabling fast integration of industrial communication into your applications.



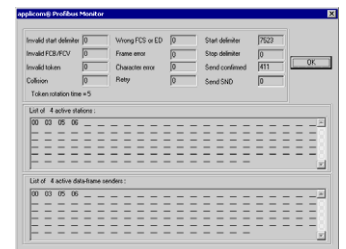
- Configuration Software -



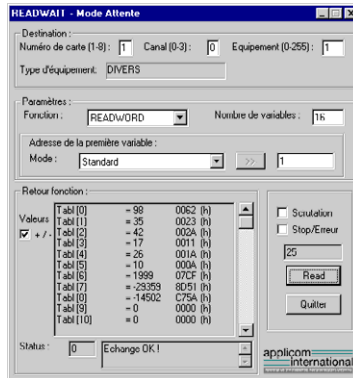
- GSD Editor -



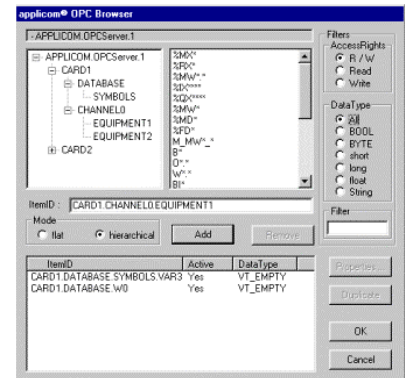
- User's configuration manager -



- Profibus Troubleshooting Tool -



- Testing tools -



- OPC Browser -

Ordering Information

Part Number	Description
APP-PFB-PCU	applicom® PCU1500PFB Full Profibus 1.5Mb card, Universal PCI 3.3V / 5V (PCI-X compatible)
APP-PS7-PCU	applicom® PCU1500S7Profibus dedicated Simatic S7 1.5Mb card, Universal PCI 3.3V / 5V (PCI-X compatible)
APP-PFB-CPCI	applicom® CPCI1000PFB Full Profibus 12Mb card, Compact PCI
PA9D01-42	Profibus D-Sub 9-pin with Diagnostics, 90° connector (vertical)
MA9D01-42	Profibus D-Sub 9-pin with Diagnostics, 0° connector (horizontal)
PA9DS01-42	Profibus D-Sub 9-pin with Diagnostics, 45° connector

Other related products: Combo Ethernet+Profibus (PCU2000ETH card). Form factors available (ISA, CompactPCI, PC/104). Profibus-DP Master/Slave only (PCI-DPIO card). Low cost S7/MPI solution (DRL-MPI-PCU card).

For product and technical information, Visit: www.woodhead.com

BradCommunications™
from Woodhead Industries

North America: US +1 800 225 7724 – Canada +1 519 725 5136
Europe: France, +33 2 32 96 04 20 – Germany, +49 711 782 3740 – Italy, +39 010 59 30 77 –
 United Kingdom, +44 1495 356300
Asia: China, +86 21 50328080 – Singapore, +65 261 6533 – Japan, +81 3 5791 4621

BradCommunications and applicom are trademarks of Woodhead Industries, Inc. © 2006 Woodhead Industries, Inc.